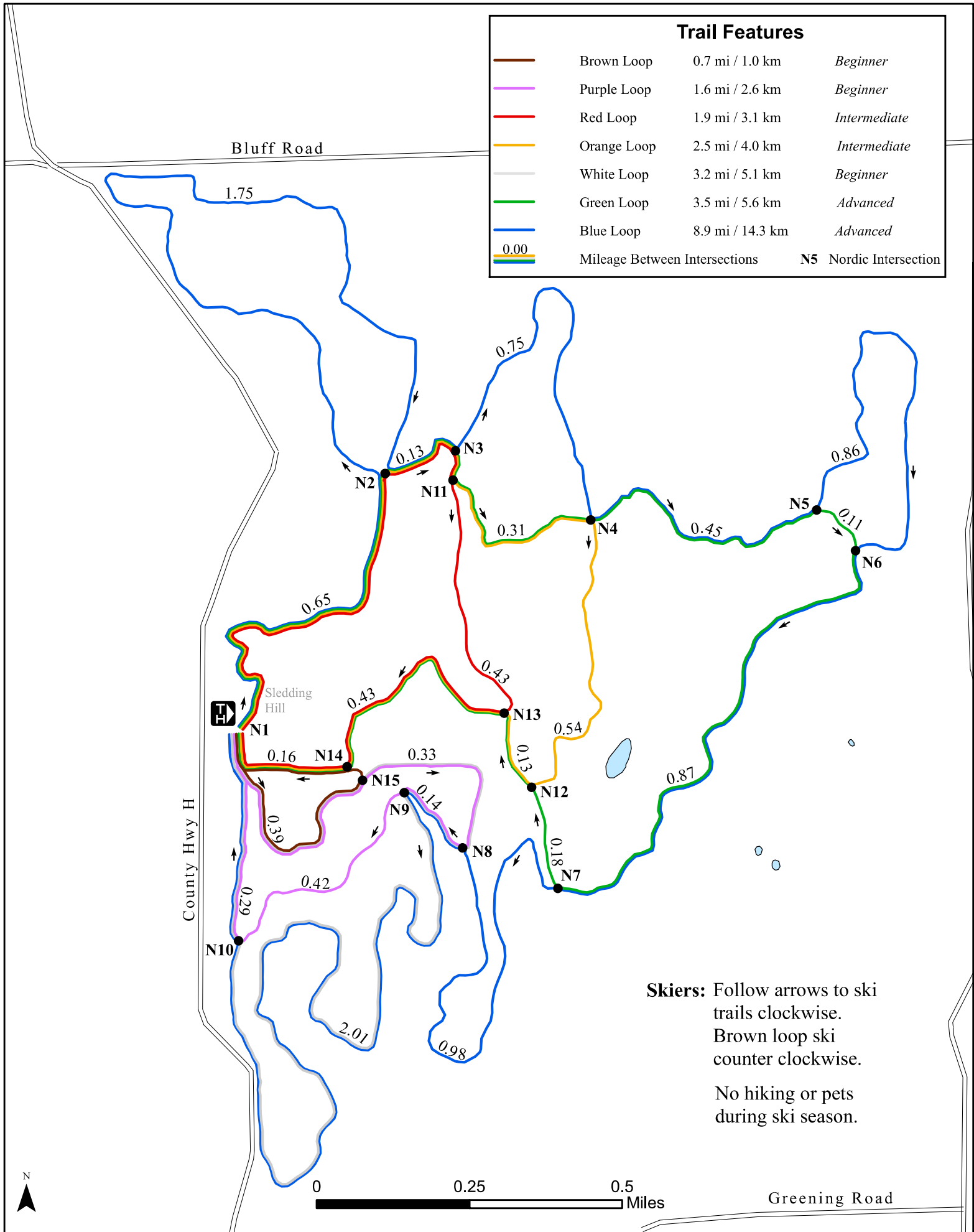


Trail Features			
	Brown Loop	0.7 mi / 1.0 km	<i>Beginner</i>
	Purple Loop	1.6 mi / 2.6 km	<i>Beginner</i>
	Red Loop	1.9 mi / 3.1 km	<i>Intermediate</i>
	Orange Loop	2.5 mi / 4.0 km	<i>Intermediate</i>
	White Loop	3.2 mi / 5.1 km	<i>Beginner</i>
	Green Loop	3.5 mi / 5.6 km	<i>Advanced</i>
	Blue Loop	8.9 mi / 14.3 km	<i>Advanced</i>
	Mileage Between Intersections		<b>N5</b> Nordic Intersection



**Skiers:** Follow arrows to ski trails clockwise. Brown loop ski counter clockwise.

No hiking or pets during ski season.